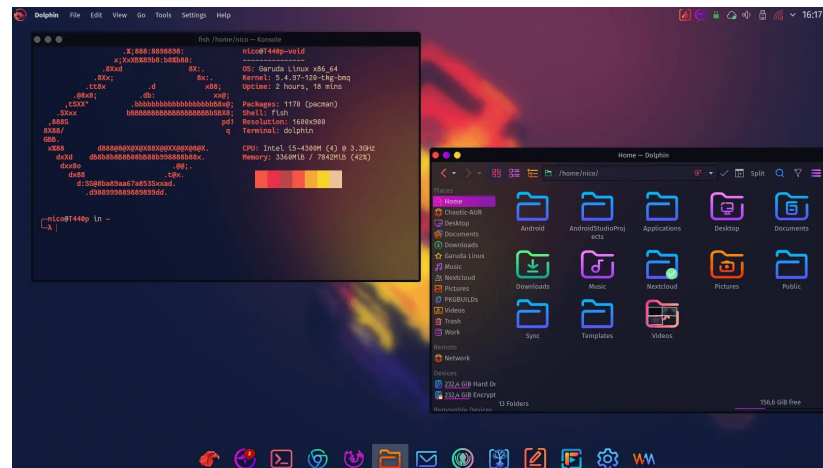




# Garuda Linux - The Best of All Worlds on Arch Linux

Michael Monaco, Jr.



# History of Garuda Linux

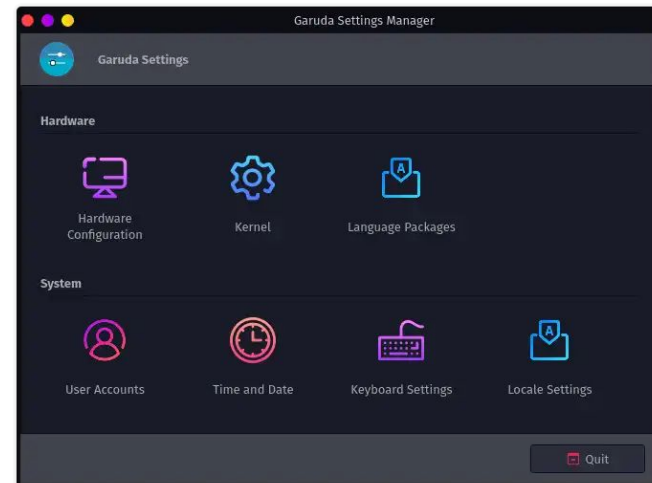
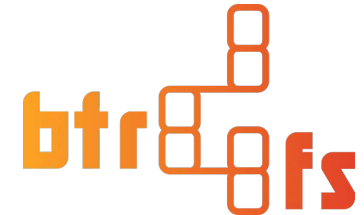
- Garuda Linux started out as a unofficial community spin of Manjaro called “Manjarowish” in 2019.
  - This spin was created by Shrinivas Kumbhar (librewish), a University student from Kolhapur, Maharashtra, India
  - The initially touted features included: BTRFS, ZRAM Swap, Performance Enhancements, and Wine installed by Default



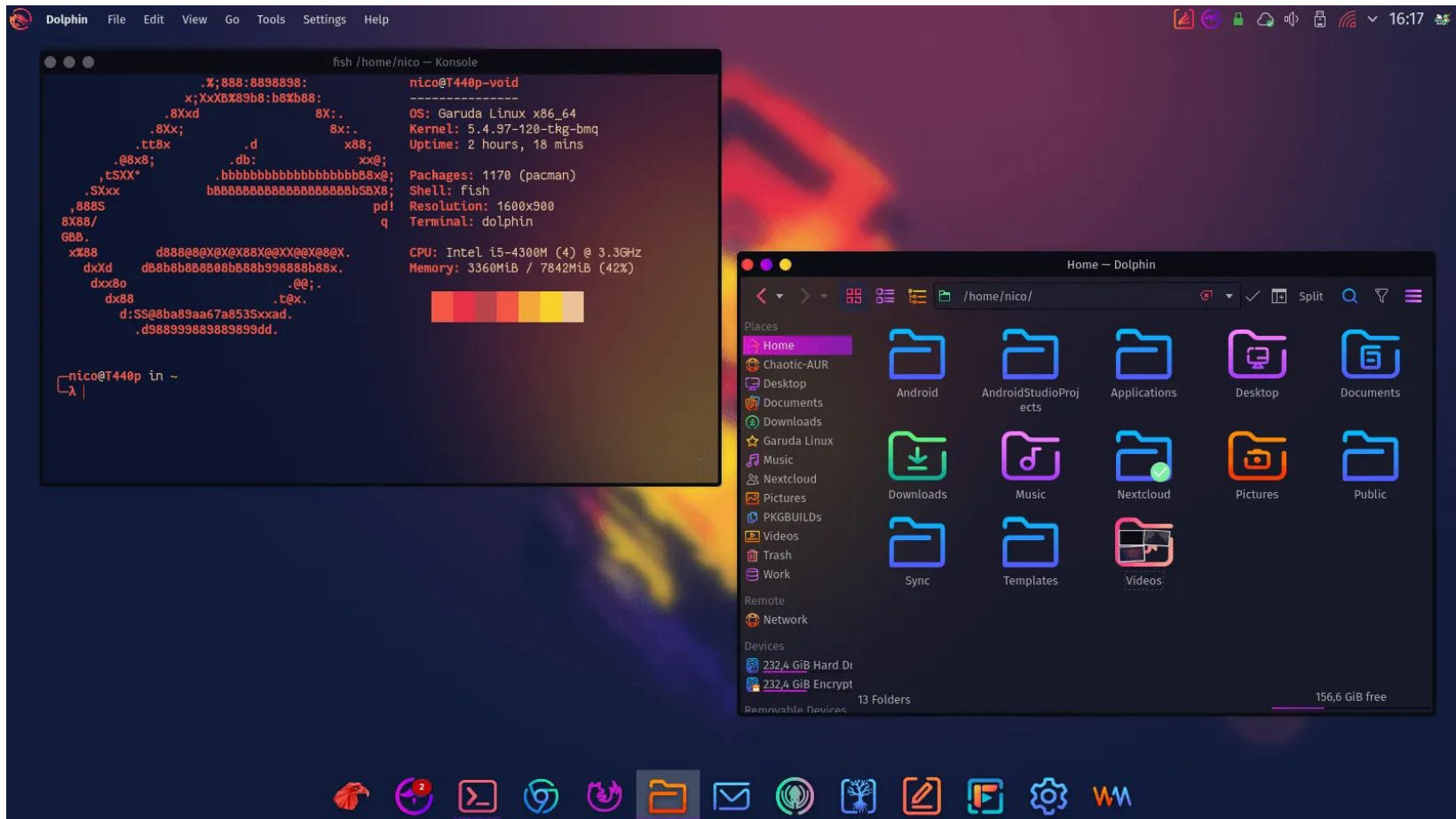
- In mid-2020, this spawned a new Arch-based distribution called “Garuda Linux.”
  - Garuda Linux is named after a “legendary bird figure” in the Hindu, Buddhist, and Jain religion

# Current Features

- BTRFS by default
  - Instant timeshift snapshots before every update
    - Snapshots can be loaded from Grub
- Custom linux-zen/linux-tdk kernels by default
  - Better multimedia/gaming performance
- Fish shell by default
- Performance Tweaks
  - Nohang
  - Custom Schedulers (auto-cpufreq)
  - ZRAM Swap
- Manjaro user tools ported to Arch
  - This includes tools such as mhwd, manjaro-settings-manager, and pamac



# Another Feature: Eye-Candy!



Garuda KDE dr460ized

Garuda ships each version with a plethora of visually-appealing customizations.

# Chaotic-AUR

- The Chaotic-AUR is an unofficial repository that is added by default on Garuda Linux. It contains pre-compiled AUR packages and Garuda-specific packages.
  - It is the largest unofficial Arch Repository, with over 1800 packages!
  - Users can also request for packages to be added
- Pre-compiled AUR packages allow for quicker installation and also allow updates to be installed through Pacman instead of an AUR helper.
- The Chaotic-AUR + Arch Repos creates one of the most expansive and complete software libraries on any distro.

# Desktops! So many desktops!



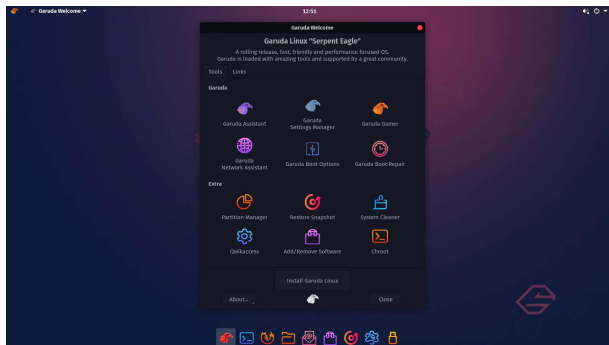
XFCE



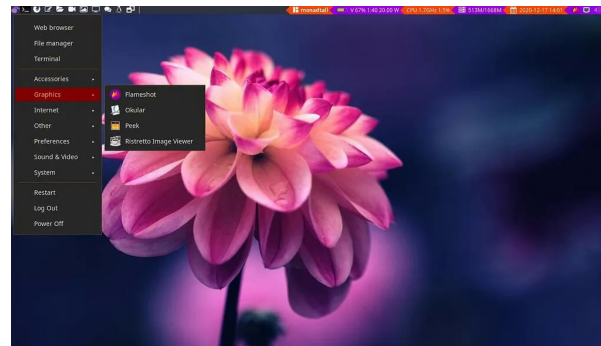
LXQT-KWin



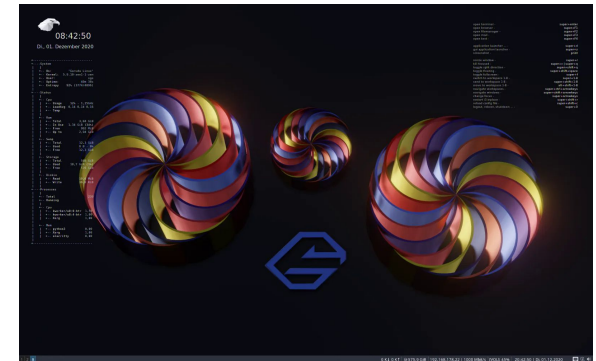
Wayfire



Gnome



QTile



i3wm

In addition to KDE, Garuda Linux has a large variety of other editions  
Note: couldn't fit BSPWM on here

# Overview

- Garuda Linux could be described as a happy medium between Manjaro and Arch
  - It uses regular Arch repositories, but has Manjaro tools installed
- Garuda provides hard to set up enthusiast features by default, making them more accessible.
  - To get to the same level of set up on a plain Arch install would take weeks of hard work for a new user
- Garuda Linux has a strong online community. It is clear from the meticulous theming and constant tweaking that it is a passion project.

**Questions?**